

DreamBox Learning Math Implementation Success Guide

FOR GRADES 6–8 EDUCATORS



Welcome to DreamBox Learning Math! This implementation guide provides key actions, information and resources to ensure a successful start.

GUIDE AT A GLANCE

- Why DreamBox? – page 1
- The Student Environment – page 2
- Getting Started – page 2
- Implementation Planning – page 3 & 4
- Monitoring Student Usage – page 5
- Providing Lesson Support – page 6
- At-Home & Additional Resources – page 7



WHY DREAMBOX?

DreamBox is designed to complement your math instruction by personalizing learning for all students. Features of DreamBox Math learning include:

Student-driven: DreamBox lessons are strategically designed to promote conceptual understanding as the learner problem-solves with digital tools and manipulatives

Continuous assessment: Student thinking is continuously assessed, eliminating the need for a one-time placement test

Adaptive: DreamBox collects data about student thinking as they play lessons to adapt to the just-right level - both within lessons to provide scaffolding and between lessons to personalize the lesson pathway

Proven Growth: If students play DreamBox as recommended and complete at least five lessons each week, you can expect to see an average of 1.5 grade levels of growth by the end of the school year

Learn more by completing the Adaptivity & Assessment mini-course found on the Resources page of your DreamBox Dashboard.

THE STUDENT LEARNING EXPERIENCE

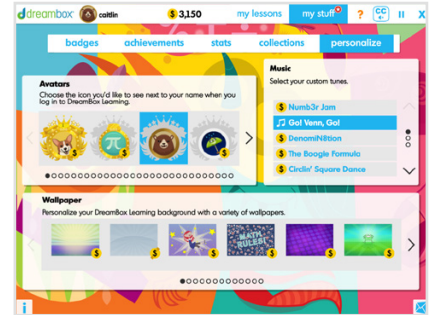
Students experience DreamBox in a gamified environment designed to enable student-centered learning, promote conceptual understanding and motivate usage with engagement features.



Lesson Chooser page



Digital manipulatives

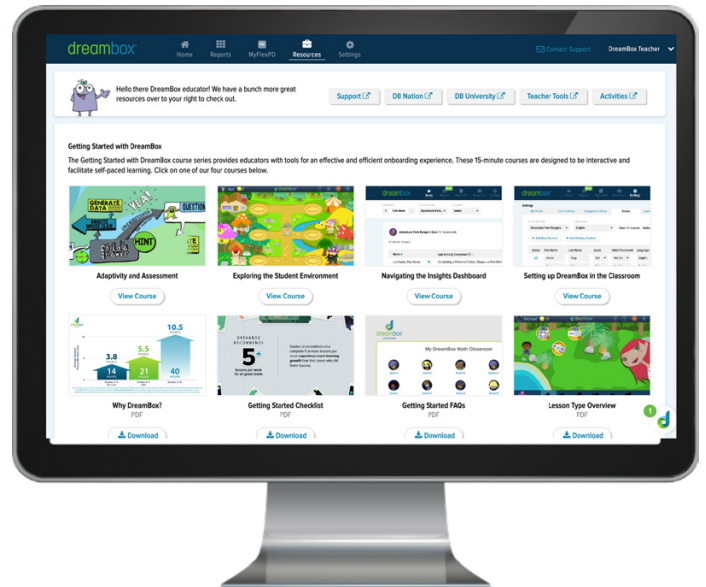


Engagement areas

CHECK IT OUT

To learn more about the features within the student learning environments, check out the **Exploring the Student Environment** mini-course found in the Resources page of the Insights Dashboard.

To explore the learning environments and play sample DreamBox lessons visit dreambox.com/k-8-math-lessons



GETTING STARTED

- Create an implementation plan with a goal for student achievement and lesson completion. (Recommendations on page 3 and 4 of this guide).
- In your DreamBox Insights Dashboard Settings, adjust the curricular **Initial Placement Level** and language (English or Spanish) for any necessary students to support them with a strong start.

Note: A student's Initial Placement Level may only be adjusted by the teacher before the student logs in for the first time. To update an Already Placed Initial Placement Level after a student has begun playing, please contact [Customer Support](#).

- Introduce students to DreamBox by watching the [Welcome to DreamBox](#) video or projecting a sample lesson from the demo [grades 6 - 8 environment](#) and discussing expectations.
- Students log in and play! For login support, view our [support articles](#).

First Name	Last Name	Grade	Initial Placement Level	Gender	Language
Chandler	T	3rd Grade	Select	--	English
Amy	J	3rd Grade	Already Placed	--	English
Ashley	L	3rd Grade	Already Placed	--	English

IMPLEMENTATION PLANNING

Student success with DreamBox starts with determining goals for implementation, a corresponding student usage goal, and model that supports the middle school instructional schedule.

Implementation Goals

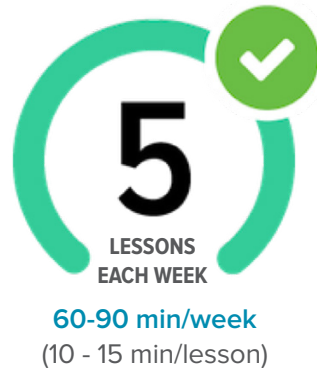
How would you like to support student achievement with DreamBox? These are sample implementation goals that can be supported through DreamBox features. Many implementations will have a combination of goals, personalized to student needs.

Differentiated support	Differentiated support + core supplement	Differentiated support + targeted intervention
Students receive differentiated math support via their personalized DreamBox lesson pathway. Every student is working on what they need most.	Students receive differentiated math support but are also engaging with high-quality teacher-assigned lessons to strategically support core math instruction.	MTSS or Tier 3 students receive differentiated math support but are also engaging with targeted practice and progress monitoring of concepts assigned by a teacher.

Usage Goals

To maximize learning gains, DreamBox recommends students complete a total of at least **five lessons** each week.

The time listed indicates an approximate amount of time required for students to reach this goal. Due to DreamBox's in-lesson adaptivity, the time required to complete five lessons will vary by student.



Implementation models

After the implementation and usage goal has been determined, identify where DreamBox fits into the instructional schedule. Be creative! Use the suggested implementation models as starting points but look for alternative opportunities in the school day for students to get in their five lessons.



Small group (Recommended)

Some students work on DreamBox, while others work with the teacher or another activity.

Use when instructional time is differentiated or access to devices is limited.



Whole group

All students concurrently work on DreamBox while a supervising teacher actively monitors the room.

Use when supplemental periods are provided (Flex, Advisory, Intervention, etc.) and 1:1 devices are present.



Homework

Students complete DreamBox lessons as a differentiated homework activity.

Use when students have school-provided devices and equitable internet access.

SAMPLE EXPECTATIONS & LOGISTICS

Have an idea of which implementation model (or combination of implementation models) best fits your schedule and implementation goal? Below are a few sample logistical expectations by model.

Model	Student expectations	Teacher expectations
Small group	<ul style="list-style-type: none"> Complete one to two lessons within small group time (minimum 15 to 20 mins) <p>Core/intervention goals:</p> <ul style="list-style-type: none"> Complete two lessons (one assigned lesson, then one choice lesson) 	<ul style="list-style-type: none"> Provide small-group instruction Check lesson data/alerts after group time <p>Core/intervention goals:</p> <ul style="list-style-type: none"> Assign concepts and closely monitor assignment progress
Whole group	<ul style="list-style-type: none"> Complete one lesson for every 15 mins of play <p>Core/intervention goals:</p> <ul style="list-style-type: none"> Balance assigned lessons with choice lessons 	<p>Actively monitor lesson activity as students work. Math teacher (if not supervising teacher) checks lesson data/alerts weekly.</p> <p>Core/intervention goals:</p> <ul style="list-style-type: none"> Assign concepts and closely monitor assignment progress
Homework	<p>Complete one to two lessons nightly</p> <p>Core/intervention goals:</p> <ul style="list-style-type: none"> Balance assigned lessons with choice lessons 	<p>Monitor student lesson activity and alerts</p> <p>Core/intervention goals:</p> <ul style="list-style-type: none"> Assign concepts and closely monitor assignment progress

SAMPLE SMALL GROUP SCHEDULES

Implementing DreamBox in a small group instructional model is a great way to provide differentiation during structured math times. For sample small group structures, view the suggestions below.

Small Group Guided Math

Divide students into two groups: one group participates in the math lesson while the other half works on DreamBox.

Sample 60-Minute Block:

- 10 min warm up
- 20 min small group 1
 - Group A guided math
 - Group B DreamBox
- 20 min small group 2
 - Group A DreamBox
 - Group B guided math
- 10 min cool down/exit ticket

Small Group Guided Practice

Students receive the math lesson whole group, and then split into small groups for lesson practice and DreamBox.

Sample 60-Minute Block:

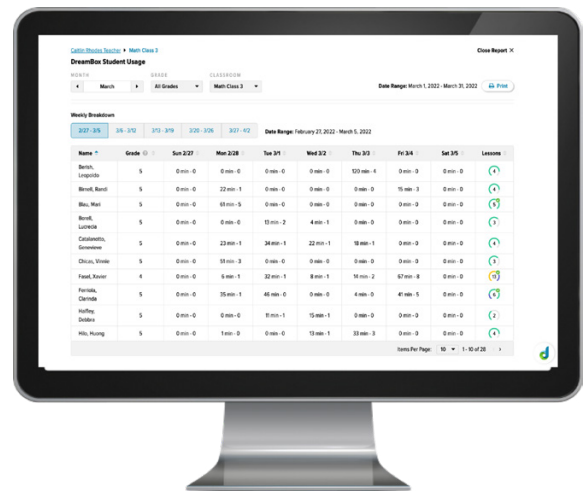
- 20 min whole group lesson
- 15 min small group 1
 - Group A guided practice
 - Group B DreamBox
- 15 min small group 2
 - Group A DreamBox
 - Group B guided practice
- 10 min cool down/exit ticket

To hear how other educators implement DreamBox in their classrooms, join the conversation on [DreamBox Nation](#).

MONITORING STUDENT USAGE

Once DreamBox is launched in the classroom, log in to your Insights Dashboard weekly to monitor student progress toward meeting their lesson goal.

1. Navigate to the **Home** page and view the Total Lessons column.
2. Use the dropdown filter to switch between classrooms.
- 3 Send a **message** to communicate to students about their lesson progress.



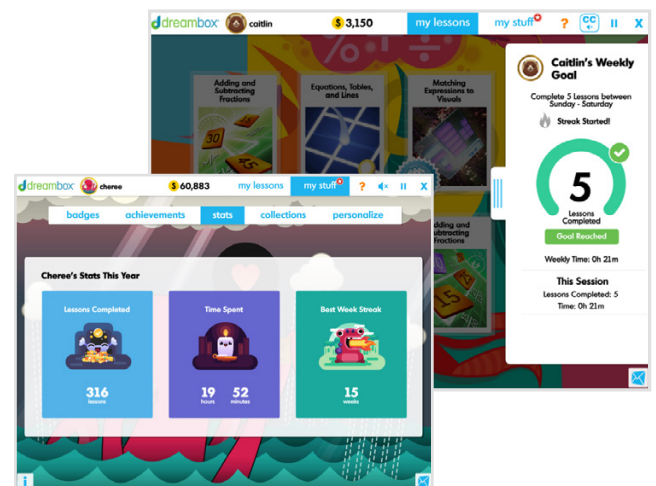
For Frequently Asked Questions and detailed information about the Home page, download the FAQ document from the Resource page of the Insights Dashboard.

To view a daily breakdown as seen above, use the view monthly student usage link in the top right of the student usage table or view the Student Usage report from the Reports page.

Students can also self-monitor progress toward their weekly lesson goal from within the student learning environment.

Using the tab on the right side of the lesson chooser, they can view multiple usage metrics including weekly lessons completed and current Week Streak for each consecutive week they complete at least five lessons.

These metrics contribute to the cumulative Stats page found in the My Stuff area of the student dashboard.



ASSIGNMENTS

If your implementation goals include supplementing DreamBox's recommended learning pathway with lessons on targeted concepts, you can create DreamBox Assignments for students.

Assigned lessons appear on the student's lesson chooser page with a blue assignment icon, depending on the type of assignment (short or long term).

For a video overview of creating DreamBox Assignments, [click here](#).

PROVIDING LESSON SUPPORT

When introducing DreamBox in the classroom, it's important to discuss the [healthy habits](#) that contribute to student success.

If students need additional support when working on DreamBox lessons, encourage them to use the in-lesson supports by asking prompting questions.

- 🔊 What did the directions say?
- ❓ What does the Help button say?
- 💡 Do you have the Hint button available?
- ✅ What have you tried?

Direction Audio

Help Button + Toolbar

Hint Button
Provides scaffolded hints to support lesson progress

Messaging Feature
Students can send a lesson screenshot to the teacher dashboard if they have questions or need support.

ACCESS DEMO LESSONS

It's important for students to work independently when completing lessons so that DreamBox can accurately adapt to their individual learning needs.

If the student would benefit from direct instructional support, the lesson may be accessed through the educator environment to avoid interference with student data.

Each lesson that the student has played or currently has in-progress is logged in the student's Activity Feed report. These lesson cards include a Play Lesson button that enables the educator to launch the lesson in a demo environment.

Teacher Tip

The Activity Feed report is also a great tool for connecting with students about their progress with DreamBox lessons. Meet with students one-on-one and view their Activity Feed from your Educator Dashboard. Look for areas of celebration and opportunity to hold the student accountable as you browse lesson data.

To learn how to access the Activity Feed report, [click here](#).

Bryant P

Lesson Completed with No Demonstrated Understanding

Rounding with Decimals [Play Lesson](#)

Students round rational numbers to the ones, tenths and hundredths place.

Time Spent: 16 min Attempts: 1st Time [View Progress](#)

To learn more about the teacher-student messaging feature, [click here](#).

Congratulations! Maddie successfully completed a group of DreamBox Learning lessons.

In this unit, Maddie explored the patterns that occur in the number system, such as the repeating use of 1 to 9 between the decades, and she built a hundreds chart with numerals 1 to 100.

In contrast to many other programs, DreamBox Learning enables children to actually build the chart, decade by decade, to ensure understanding. Research shows that when children are just shown a completed ready-made chart, they notice patterns but often do not understand why the patterns occur. By developing a deep understanding of the patterns in the base-ten number system, Maddie will be prepared for working with place value ideas in later units.

AT HOME RESOURCES

The Family Dashboard

Learning guardians can set up access to a Family Dashboard to monitor their child's DreamBox progress, receive email notifications of learning gains and more.

Provide directions by sending home the [Family Access letter](#) that can be found on the Home page of the educator dashboard.

YouTube Channel

Browse the [DreamBox At Home](#) YouTube Channel for helpful videos to share directly with learning guardians, or post in your classroom resources. Videos available in both English and Spanish.

Home Learning Guide

Download a pdf of hyperlinked videos and resources from the Resource section of DreamBox University. The Home Learning Guide is available in English and in Spanish.

ADDITIONAL EDUCATOR RESOURCES

DreamBox University

Engage in self-paced learning with the online professional development portal, DreamBox University. Complete PD minicourses, register for live webinars or download quick guides and classroom resources. Use the DB University link on the Resources page of your DreamBox Dashboard or [click here](#) for step-by-step instructions.

DreamBox Nation

Connect with other DreamBox educators through the online community of [DreamBox Nation](#). Get answers to your questions, share best practices and lessons learned, and participate in challenges to earn rewards. Use the DB Nation link on the Resources page of your DreamBox Insights Dashboard or [click here](#) for step-by-step instructions.

Support Site

Search for help articles by keyword or audience or contact a member of the Customer Support team. Use the Contact Support link in top right corner of your DreamBox Insights Dashboard or visit dreambox.com/support.

Getting Started with DreamBox

This page provides resources to get you up to speed and guide you to successfully implementing DreamBox Learning Math. Complete our self-paced 'Getting Started' mini-courses, register for a live webinar, or quickly access what you need in the resource library.

- Getting Started Courses**: This mini-course onboarding series covers everything you need to know to get up and running with DreamBox. (4 Courses)
- Live Webinars**: Register for complimentary webinars to learn live with the DreamBox experts. (View topics)
- Resources**: Check out the Resource Center for quick access to videos and resources. (Click it out)

Home Challenges Referrals Rewards Knowledge Base

What's New

- 2021 Spring Math Challenge**: 1 Challenge - 0 New
- Welcome!**: 2 Challenges - 0 New
- Product**: 12 Challenges - 0 New
- Professional Development**: 1 Challenge - 0 New

all categories | Latest | Top | Categories | + New Topic

Topic: **Summer - personal development & growth** (136 Replies, 125 Views, Latest Reply by Esther Villanueva)

Topic: **How students see standards progress?** (0 Replies, 1 View, Latest Reply by Kelly Sobott)

Don't forget to register your class for the Math Challenge on Demand!
Visit dreambox.com/math-challenge

